

# DIG, DIG, DIG

# (As Big As Me)

Chris Ward



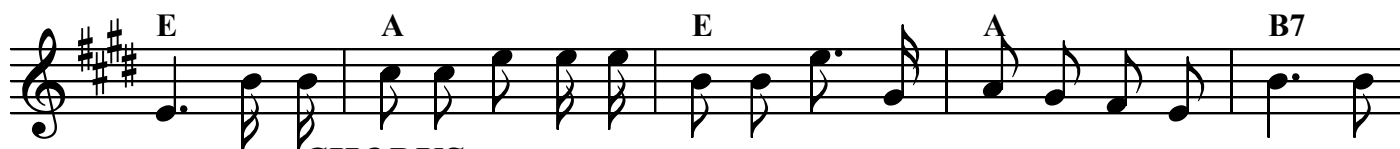
I go to the sea - side with my buck - et and my spade I dig and dig and  
fill my buck - et up with sand and build and build some more With sea-weed for the  
keep on build-ing high - er and I nev - er want to stop With shells I stick a-



ve - ry soon you'll see what I have made A ve - ry san - dy sand-cast - le that  
cur - tains and a big shell for the door Some - times it all falls down a - gain, oh  
- round the walls and feat-hers on the top Hey, eve - ry - bo - dy! Ov - er here! You



comes up to my knees One day I'm going to build one that is just as big as  
dear - ie dear - ie me One day I'm going to build one that is just as big as  
have to come and see At last I've built a sand-cast - le that's.... just as big as



## CHORUS

me With a dig dig dig, And a pat, pat, pat, When I am by the sea One  
me With a dig dig dig, And a pat, pat, pat, When I am by the sea One  
me With a dig dig dig, And a pat, pat, pat, When I am by the sea At



day I'm going to build one that is just as big as me  
day I'm going to build one that is just as big as me  
last I've built a sand-cast - le that's.... just as big as me