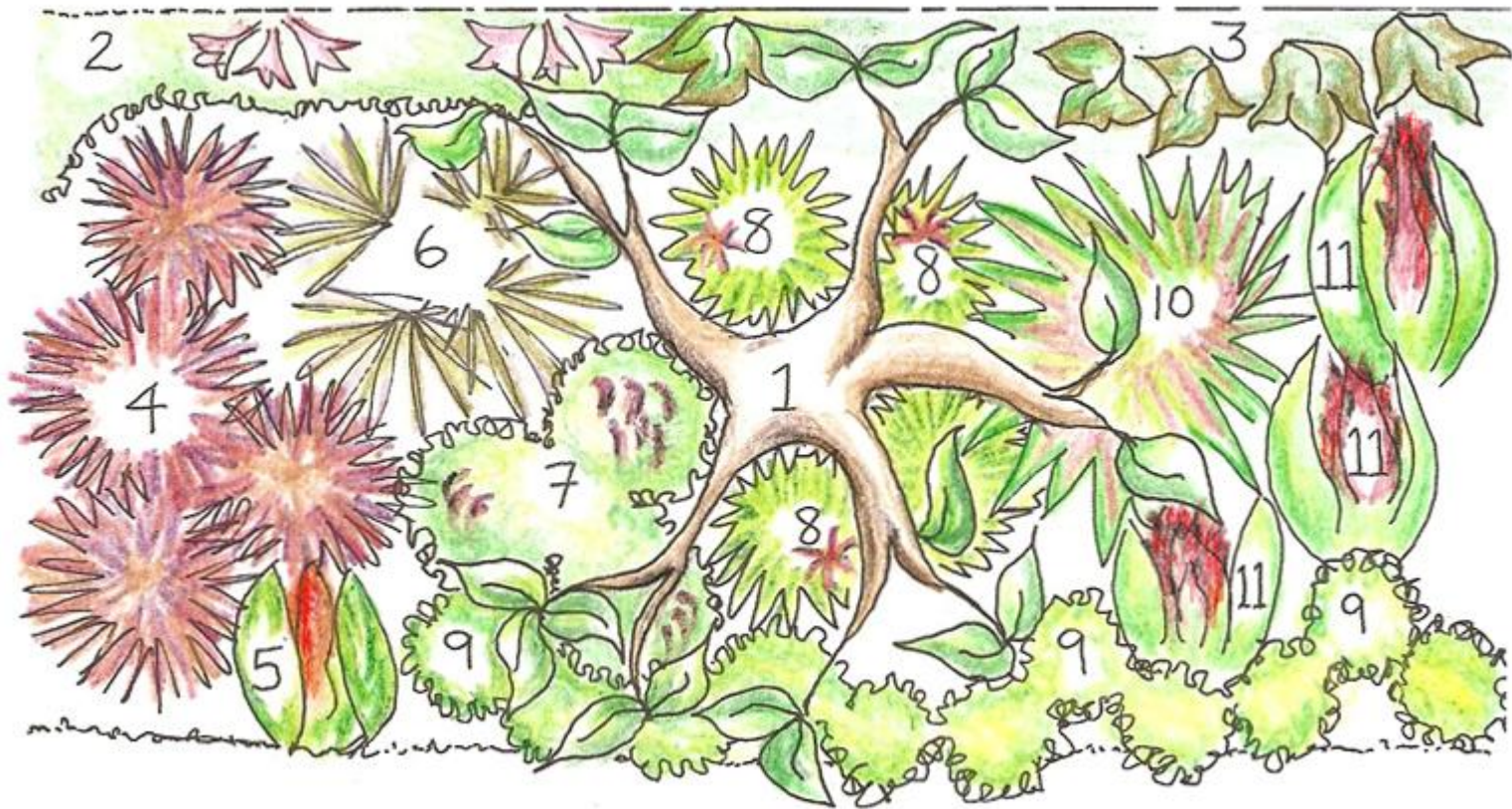


Hampton Court Palace Flower Show

Takeaway design idea: A totally tropical border

from *The Yoga Garden* designed by Sue Andrews



A totally tropical border



from *The Yoga Garden* designed by Sue Andrews

Created for a single woman who loves travel, this sumptuous, exotic feast of vivid colours and spectacular foliage will transform a sunny, sheltered spot in any chic urban garden.

1 - *Catalpa bignoniodes* 'Aurea' (x 1)

http://www.bbc.co.uk/gardening/plants/plant_finder/plant_pages/156.shtml

A spectacularly handsome tree with huge ornamental leaves up to 30cm across in golden yellow maturing to green and fabulous white flowers in summer followed by long green bean-like pods. Give it a very sheltered spot and star billing.

2 - *Campsis radicans* (x 1)

A prolific and dramatic climber covered in rich deep crimson trumpets from late summer, this exotic plant will easily cover a large wall. Though it's a little tender it should survive winter in a city microclimate.

3 - *Hedera canariensis* (x 1)

http://www.bbc.co.uk/gardening/plants/plant_finder/plant_pages/12631.shtml

One of the showiest ivies, this fast-growing climber has huge heart-shaped glossy leaves up to 15cm wide. They start yellow-green and fade to dark green, with wine-red stems.

4 - *Cordyline australis* 'Red Sensation' (x 4)

http://www.bbc.co.uk/gardening/plants/plant_finder/plant_pages/12341.shtml

The strappy leaves of these striking plants are vivid burgundy and lend a real splash of deep colour to the border, setting off carmine or orange flowers to perfection.

5 - *Canna* 'Pretoria' (x 1)

One of the most spectacular of all the cannas, 'Pretoria' has striped cream and green leaves and a brilliant orange flower in late summer. Lift rhizomes after flowering and store somewhere frost-free for winter.

6 - *Chamaerops humilis* (x 1)

http://www.bbc.co.uk/gardening/plants/plant_finder/plant_pages/5106.shtml

This lovely evergreen palm has gorgeous fan-shaped leaves and grows slowly to 3.5m tall in a sheltered spot, forming an exotic focal point. It's safe to grow it outside in a city microclimate, but bring it indoors for winter if you live in cooler parts of the country.

7 - *Phygelius x rectus* 'Devil's Tears' (x 3)

http://www.bbc.co.uk/gardening/plants/plant_finder/plant_pages/649.shtml

Cape fuschias might look exotic with their sprays of eyecatching tubular flowers, but they're very easy to grow. Give them a sheltered spot in full sun and they'll hold their leaves in winter, too. The flowers of this variety are a sumptuous scarlet with yellow throats.

8 - *Hemerocallis* 'Crimson Pirate' (x 4)

Daylilies are among the most easy of all the perennials: they're fully hardy, you can grow them in sun or shade, and they need little attention apart from lifting and dividing clumps when they get too big. This is one of the most spectacular varieties of all, with vivid deep burgundy flowers striped in yellow borne all summer.

9 - *Pachysandra terminalis* (x 11)

http://www.bbc.co.uk/gardening/plants/plant_finder/plant_pages/602.shtml

This useful ground-covering dwarf shrub, just 25cm high, has showy evergreen leaves that spread gradually to form a rich, dense carpet under shrubs and trees.

10 - *Phormium* 'Jester' (x 1)

The strappy leaves of this evergreen phormium are brilliantly eyecatching, with a central broad stripe of pink margined in green arching gracefully into a fountain of colour.

11 - *Canna coccinea* (x 3)

One of the loveliest and most delicate of the cannas, with red-tinged green leaves and graceful heads of vivid scarlet flowers in late summer. Lift rhizomes after flowering and store somewhere frost-free for winter.



bbc.co.uk/hamptoncourt